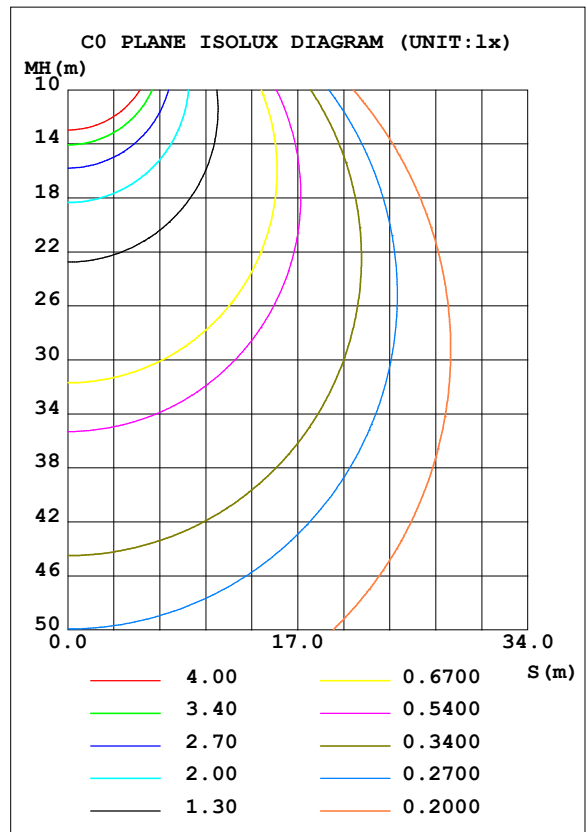
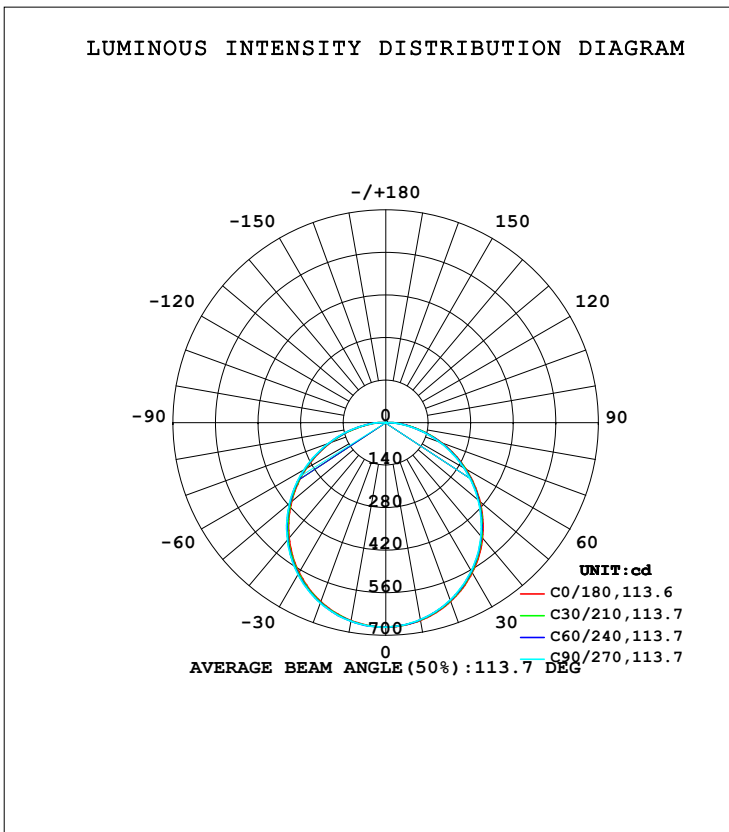


LUMINAIRE PHOTOMETRIC TEST REPORT

Test:U:230.13V I:0.0882A P:18.622W PF:0.9170 Freq:49.99Hz Lamp Flux:1981.53x1 lm		
NAME:	TYPE:	WEIGHT:
SPEC.:	DIM.:	SERIAL No.:
MFR.:	SUR.:	Shielding Angle:

DATA OF LAMP		PHOTOMETRIC DATA Eff: 106.41 lm/W			
MODEL	KLD10/KL10	I _{max} (cd)	673.1	S/MH (C0/180)	1.26
NOMINAL POWER (W)		LOR (%)	100.0	S/MH (C90/270)	1.28
RATED VOLTAGE (V)		TOTAL FLUX (lm)	1981.5	η UP, DN (C0-180)	0.1, 49.1
NOMINAL FLUX (lm)	1981.53	CIE CLASS	DIRECT	η UP, DN (C180-360)	0.2, 50.6
LAMPS INSIDE	1	η up (%)	0.3	CIBSE SHR NOM	1.25
TEST VOLTAGE (V)		η down (%)	99.7	CIBSE SHR MAX	1.35



C Range: 0 - 360DEG
 C Interval: 15.0DEG
 Test Speed: HIGH
 Temperature: 25.5DEG
 Operators: Frank.jin
 Test Date: 2019-06-13

γ Range: 0 - 180DEG
 γ Interval: 1.0DEG
 Test System: EVERFINE GO-R5000_V2 SYSTEM V2.0.366
 Humidity: 57.2%
 Test Distance: 2.096m [K=1.0000]
 Remarks:

ZONAL FLUX DIAGRAM

ZONAL FLUX DIAGRAM:

γ	C0	C45	C90	C135	C180	C225	C270	C315	γ	Φ zone	Φ total	%lum, lamp
10	660.9	659.1	658.1	658.7	661.1	662.7	663.6	663.3	0- 10	63.65	63.65	3.21,3.21
20	626.1	622.5	620.8	621.7	626.1	629.4	631.6	630.6	10- 20	182.4	246.1	12.4,12.4
30	570.0	565.4	563.0	564.0	569.9	574.9	577.6	576.3	20- 30	276.8	522.9	26.4,26.4
40	495.4	490.1	487.2	487.8	495.2	500.6	504.2	502.7	30- 40	334.6	857.5	43.3,43.3
50	405.5	400.0	396.7	397.2	404.6	410.2	414.1	413.4	40- 50	348.6	1206	60.9,60.9
60	304.2	299.2	295.5	295.1	302.0	307.5	311.6	311.2	50- 60	317.6	1524	76.9,76.9
70	196.7	192.4	188.8	187.8	193.7	198.5	202.5	202.7	60- 70	246.9	1771	89.4,89.4
80	92.43	88.42	84.75	83.53	89.42	94.12	97.92	98.37	70- 80	150.4	1921	96.9,96.9
90	16.87	15.18	14.58	14.45	17.88	20.06	21.87	21.55	80- 90	54.10	1975	99.7,99.7
100	0.0081	0.1186	0.5320	0.9716	1.784	2.130	1.663	0.7531	90-100	6.058	1981	100,100
110	0	0	0	0.0412	0.0442	0.2382	0.0523	0	100-110	0.4227	1982	100,100
120	0	0	0	0.0075	0	0	0	0	110-120	0.0078	1982	100,100
130	0	0	0	0	0	0	0	0	120-130	0.0004	1982	100,100
140	0	0	0	0	0	0	0	0	130-140	0.0000	1982	100,100
150	0	0	0	0	0	0	0	0	140-150	0	1982	100,100
160	0	0	0	0	0	0	0	0	150-160	0	1982	100,100
170	0	0	0	0	0	0	0	0	160-170	0	1982	100,100
180	0	0	0	0	0	0	0	0	170-180	0	1982	100,100
DEG	LUMINOUS INTENSITY:cd Less than 35% Percent = 14.4 %									UNIT:lm		

Conical surface Flux(90deg): 1032.9 lm

%lum = 52.1%

%lamp = 52.1%

Conical surface Flux(120deg): 1523.6 lm

%lum = 76.9%

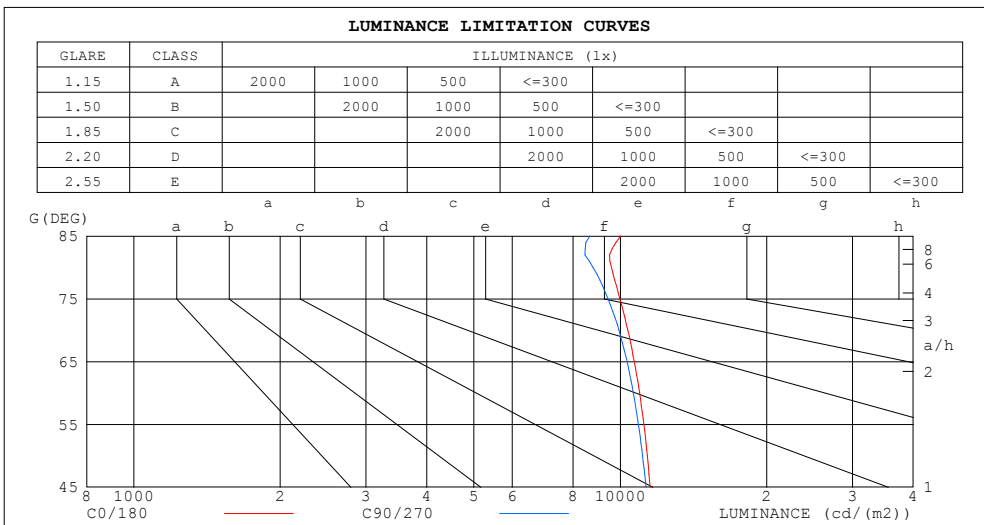
%lamp = 76.9%

C Range: 0 - 360DEG
C Interval: 15.0DEG
Test Speed: HIGH
Temperature: 25.5DEG
Operators:Frank.jin
Test Date:2019-06-13

γ Range: 0 - 180DEG
 γ Interval: 1.0DEG
Test System:EVERFINE GO-R5000_V2 SYSTEM V2.0.366
Humidity: 57.2%
Test Distance:2.096m [K=1.0000]
Remarks:

LUMINANCE LIMITATION CURVES

Test:U:230.13V I:0.0882A P:18.622W PF:0.9170 Freq:49.99Hz Lamp Flux:1981.53x1 lm		
NAME:	TYPE:	WEIGHT:
SPEC.:	DIM.:	SERIAL No.:
MFR.:	SUR.:	Shielding Angle:



LUMINANCE cd/(m2)		
G (DEG)	C0/180	C90/270
85	10029	8663
80	9587	8786
75	9978	9434
70	10358	9936
65	10684	10331
60	10958	10639
55	11177	10895
50	11363	11110
45	11523	11290

C Range: 0 - 360DEG
 C Interval: 15.0DEG
 Test Speed: HIGH
 Temperature: 25.5DEG
 Operators: Frank.jin
 Test Date: 2019-06-13

γ Range: 0 - 180DEG
 γ Interval: 1.0DEG
 Test System: EVERFINE GO-R5000_V2 SYSTEM V2.0.366
 Humidity: 57.2%
 Test Distance: 2.096m [K=1.0000]
 Remarks:

WEC AND CCEC

Test:U:230.13V I:0.0882A P:18.622W PF:0.9170 Freq:49.99Hz Lamp Flux:1981.53x1 lm		
NAME:	TYPE:	WEIGHT:
SPEC.:	DIM.:	SERIAL No.:
MFR.:	SUR.:	Shielding Angle:

ρ_{cc}	80%			70%			50%			30%			10%			0
ρ_w	50%	30%	10%	50%	30%	10%	50%	30%	10%	50%	30%	10%	50%	30%	10%	0
ρ_{fc}	20%			20%			20%			20%			20%			0
RCR	RCR:Room Cavity Ratio						Wall Exitance Coefficients (WEC)									
0.0																
1.0	.322	.183	.058	.315	.180	.057	.301	.173	.055	.289	.167	.053	.278	.161	.052	
2.0	.299	.164	.050	.293	.161	.050	.281	.156	.049	.270	.151	.047	.260	.147	.046	
3.0	.275	.146	.044	.270	.144	.043	.259	.140	.043	.249	.137	.042	.240	.133	.041	
4.0	.253	.131	.039	.248	.130	.038	.239	.127	.038	.230	.123	.037	.222	.121	.037	
5.0	.233	.119	.034	.229	.117	.034	.220	.115	.034	.213	.112	.033	.205	.110	.033	
6.0	.216	.108	.031	.212	.107	.031	.205	.105	.030	.198	.103	.030	.191	.101	.030	
7.0	.201	.099	.028	.197	.098	.028	.190	.096	.028	.184	.094	.027	.178	.093	.027	
8.0	.187	.091	.026	.184	.091	.026	.178	.089	.025	.172	.087	.025	.167	.086	.025	
9.0	.175	.085	.024	.172	.084	.024	.167	.083	.023	.162	.081	.023	.157	.080	.023	
10.0	.165	.079	.022	.162	.078	.022	.157	.077	.022	.153	.076	.022	.148	.075	.021	

ρ_{cc}	80%			70%			50%			30%			10%			0
ρ_w	50%	30%	10%	50%	30%	10%	50%	30%	10%	50%	30%	10%	50%	30%	10%	0
ρ_{fc}	20%			20%			20%			20%			20%			0
RCR	RCR:Room Cavity Ratio						Ceiling Cavity Exitance Coefficients (CCEC)									
0.0	.193	.193	.193	.165	.165	.165	.113	.113	.113	.065	.065	.065	.021	.021	.021	
1.0	.184	.159	.136	.157	.136	.117	.107	.094	.081	.062	.054	.047	.020	.017	.015	
2.0	.176	.134	.100	.151	.116	.086	.103	.080	.060	.059	.047	.035	.019	.015	.011	
3.0	.168	.117	.076	.144	.101	.066	.099	.070	.046	.057	.041	.027	.018	.013	.009	
4.0	.160	.104	.060	.138	.090	.052	.095	.062	.037	.055	.037	.022	.018	.012	.007	
5.0	.153	.093	.049	.131	.081	.043	.090	.056	.030	.052	.033	.018	.017	.011	.006	
6.0	.146	.085	.041	.125	.074	.036	.086	.051	.026	.050	.030	.015	.016	.010	.005	
7.0	.139	.078	.036	.119	.068	.031	.082	.047	.022	.048	.028	.013	.015	.009	.004	
8.0	.132	.072	.031	.114	.063	.027	.079	.044	.019	.046	.026	.011	.015	.009	.004	
9.0	.126	.067	.028	.109	.058	.024	.075	.041	.017	.044	.024	.010	.014	.008	.003	
10.0	.120	.063	.025	.104	.055	.022	.072	.038	.015	.042	.023	.009	.014	.007	.003	

C Range: 0 - 360DEG
C Interval: 15.0DEG
Test Speed: HIGH
Temperature: 25.5DEG
Operators: Frank.jin
Test Date: 2019-06-13

γ Range: 0 - 180DEG
 γ Interval: 1.0DEG
Test System: EVERFINE GO-R5000_V2 SYSTEM V2.0.366
Humidity: 57.2%
Test Distance: 2.096m [K=1.0000]
Remarks:

UGR(Unified Glare Rating) Table

Test:U:230.13V I:0.0882A P:18.622W PF:0.9170 Freq:49.99Hz Lamp Flux:1981.53x1 lm										
NAME:					TYPE:			WEIGHT:		
SPEC.:					DIM.:			SERIAL No.:		
MFR.:					SUR.:			Shielding Angle:		
ceiling/cavity	0.7	0.7	0.5	0.5	0.3	0.7	0.7	0.5	0.5	0.3
walls	0.5	0.3	0.5	0.3	0.3	0.5	0.3	0.5	0.3	0.3
working plane	0.2	0.2	0.2	0.2	0.2	0.2	0.2	0.2	0.2	0.2
Room dimensions	Viewed crosswise					Viewed endwise				
x = 2H y = 2H	18.8	20.4	19.1	20.6	20.8	18.7	20.2	19.0	20.5	20.7
3H	20.4	21.9	20.7	22.1	22.3	20.3	21.7	20.6	22.0	22.2
4H	21.1	22.5	21.4	22.7	23.0	20.9	22.3	21.3	22.6	22.8
6H	21.7	22.9	22.0	23.2	23.5	21.4	22.7	21.8	23.0	23.3
8H	21.9	23.1	22.2	23.4	23.7	21.6	22.8	21.9	23.1	23.4
12H	22.0	23.2	22.4	23.5	23.8	21.7	22.9	22.1	23.2	23.5
4H 2H	19.4	20.8	19.8	21.0	21.3	19.4	20.7	19.7	21.0	21.2
3H	21.2	22.4	21.6	22.7	23.0	21.1	22.3	21.5	22.6	22.9
4H	22.1	23.1	22.4	23.5	23.8	21.9	23.0	22.3	23.3	23.7
6H	22.7	23.7	23.1	24.1	24.4	22.5	23.5	22.9	23.9	24.2
8H	23.0	23.9	23.4	24.3	24.7	22.8	23.7	23.2	24.0	24.4
12H	23.2	24.1	23.7	24.4	24.9	22.9	23.8	23.4	24.2	24.6
8H 4H	22.4	23.3	22.8	23.6	24.0	22.2	23.1	22.6	23.5	23.9
6H	23.2	23.9	23.6	24.4	24.8	23.0	23.8	23.5	24.2	24.6
8H	23.6	24.2	24.0	24.7	25.1	23.3	24.0	23.8	24.4	24.9
12H	23.9	24.5	24.4	24.9	25.4	23.6	24.2	24.1	24.6	25.1
12H 4H	22.4	23.2	22.8	23.6	24.0	22.2	23.1	22.7	23.5	23.9
6H	23.3	23.9	23.7	24.4	24.8	23.1	23.8	23.6	24.2	24.6
8H	23.7	24.3	24.2	24.7	25.2	23.5	24.0	23.9	24.5	25.0
Variations with the observer position at spacings:										
S = 1.0H	+ 0.1 / - 0.2					+ 0.1 / - 0.2				
1.5H	+ 0.2 / - 0.3					+ 0.2 / - 0.3				
2.0H	+ 0.1 / - 0.3					+ 0.1 / - 0.3				

CIE Pub.117, 1982 lm Total Lamp Luminous Flux Correct ($8\log(F/F_0) = 2.4$)

C Range: 0 - 360DEG
C Interval: 15.0DEG
Test Speed: HIGH
Temperature: 25.5DEG
Operators: Frank.jin
Test Date: 2019-06-13

γ Range: 0 - 180DEG
 γ Interval: 1.0DEG
Test System: EVERFINE GO-R5000_V2 SYSTEM V2.0.366
Humidity: 57.2%
Test Distance: 2.096m [K=1.0000]
Remarks:

UTILIZATION FACTORS TABLE

Test:U:230.13V I:0.0882A P:18.622W PF:0.9170 Freq:49.99Hz Lamp Flux:1981.53x1 lm		
NAME:	TYPE:	WEIGHT:
SPEC.:	DIM.:	SERIAL No.:
MFR.:	SUR.:	Shielding Angle:

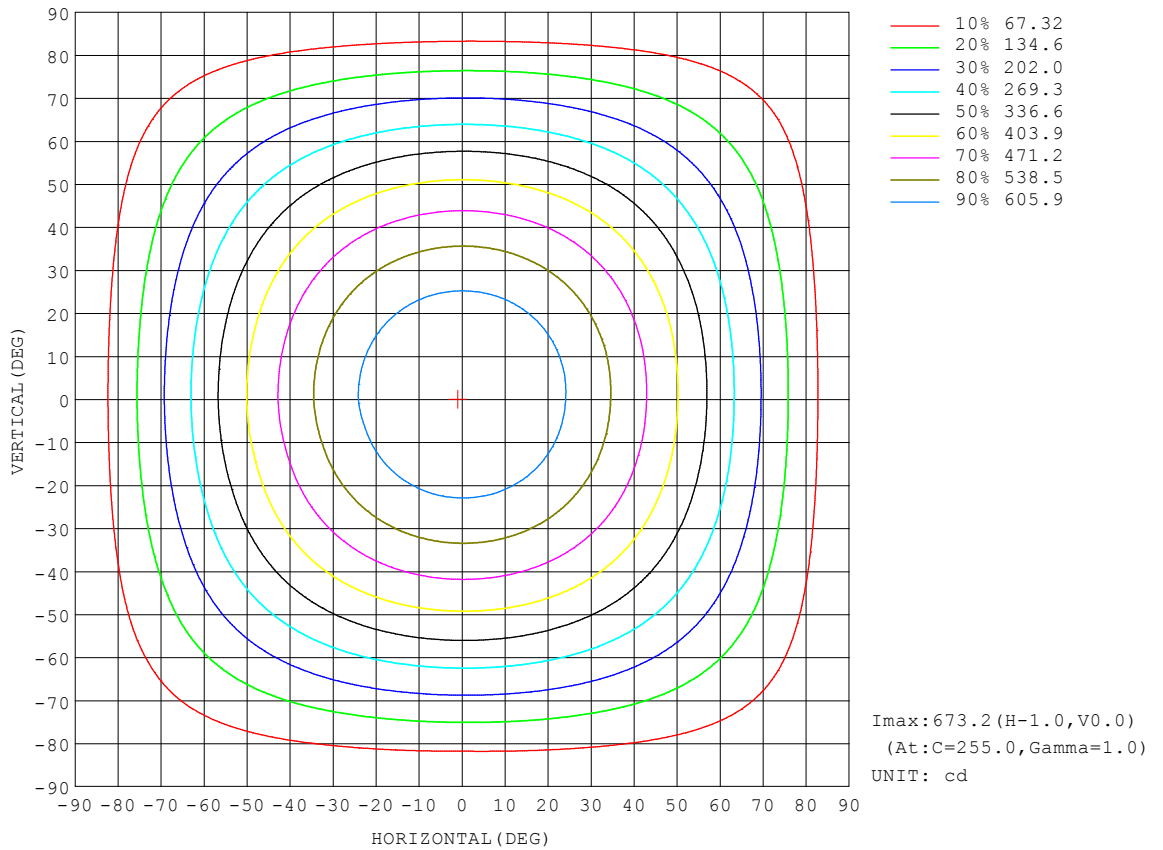
REFLECTANCE										
Ceiling	0.8	0.8	0.8	0.7	0.7	0.7	0.5	0.5	0.5	0
Walls	0.7	0.5	0.3	0.7	0.5	0.3	0.7	0.5	0.3	0
Working plane	0.2	0.2	0.2	0.2	0.2	0.2	0.2	0.2	0.2	0
ROOM INDEX	UTILIZATION FACTORS (PERCENT) $k(RI) \times RCR = 5$									
k = 0.60	57	45	38	56	45	38	55	44	38	31
0.80	67	55	47	66	54	47	64	54	47	40
1.00	75	64	56	74	63	56	72	65	55	48
1.25	82	71	64	81	71	64	78	69	63	55
1.50	87	77	70	85	76	69	82	74	68	61
2.00	94	85	79	92	84	78	89	82	76	68
2.50	98	90	84	96	89	83	92	86	81	72
3.00	101	94	89	99	93	88	95	90	85	77
4.00	106	100	95	103	98	93	99	94	91	82
5.00	108	103	99	106	101	97	101	97	94	85
ROOM INDEX	UF(total)									Direct
According to DIN EN 13032-2 2004			Suspended				SHRNOM = 1.25			

C Range: 0 - 360DEG
C Interval: 15.0DEG
Test Speed: HIGH
Temperature: 25.5DEG
Operators: Frank.jin
Test Date: 2019-06-13

γ Range: 0 - 180DEG
 γ Interval: 1.0DEG
Test System: EVERFINE GO-R5000_V2 SYSTEM V2.0.366
Humidity: 57.2%
Test Distance: 2.096m [K=1.0000]
Remarks:

ISOCANDELA DIAGRAM

Test:U:230.13V I:0.0882A P:18.622W PF:0.9170 Freq:49.99Hz Lamp Flux:1981.53x1 lm		
NAME:	TYPE:	WEIGHT:
SPEC.:	DIM.:	SERIAL No.:
MFR.:	SUR.:	Shielding Angle:

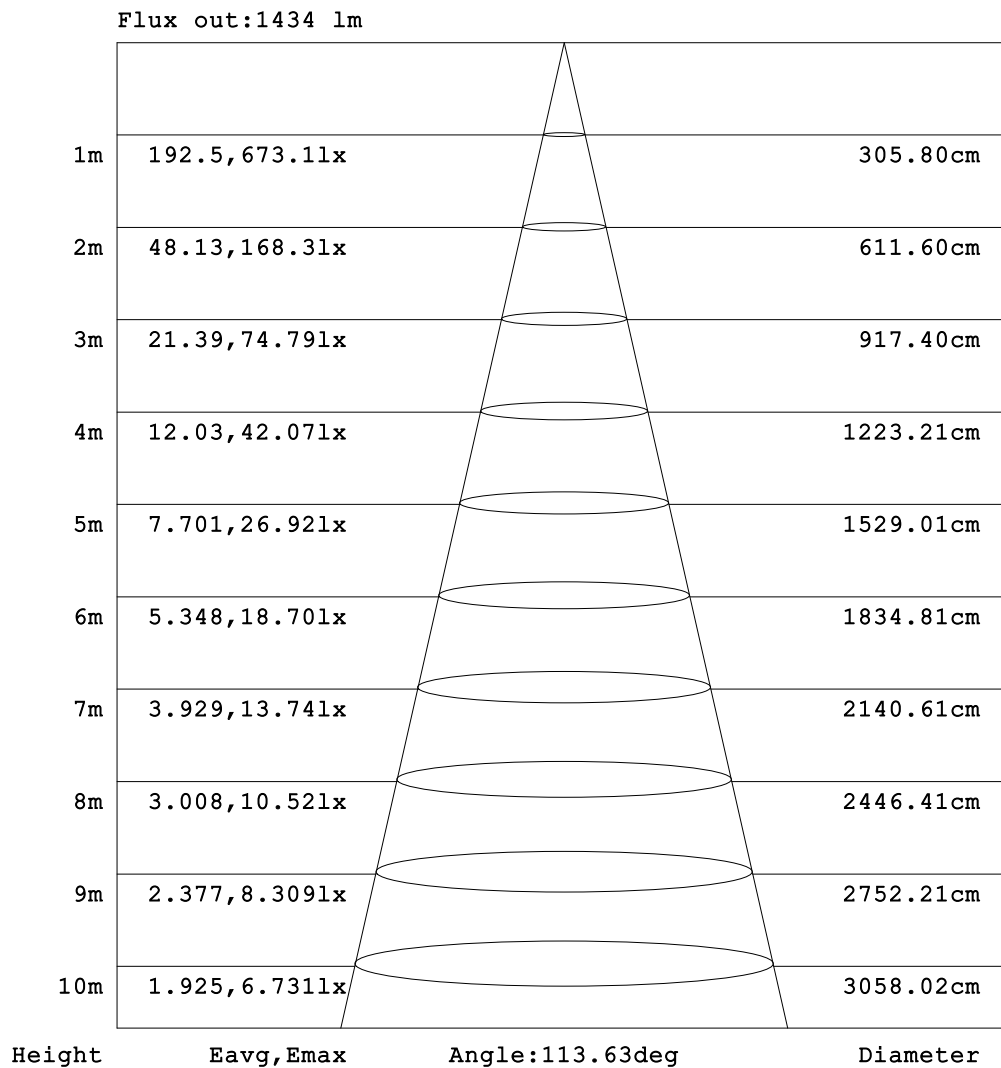


C Range: 0 - 360DEG
 C Interval: 15.0DEG
 Test Speed: HIGH
 Temperature: 25.5DEG
 Operators: Frank.jin
 Test Date: 2019-06-13

γ Range: 0 - 180DEG
 γ Interval: 1.0DEG
 Test System: EVERFINE GO-R5000_V2 SYSTEM V2.0.366
 Humidity: 57.2%
 Test Distance: 2.096m [K=1.0000]
 Remarks:

AAI Figure

Test:U:230.13V I:0.0882A P:18.622W PF:0.9170 Freq:49.99Hz Lamp Flux:1981.53x1 lm		
NAME:	TYPE:	WEIGHT:
SPEC.:	DIM.:	SERIAL No.:
MFR.:	SUR.:	Shielding Angle:

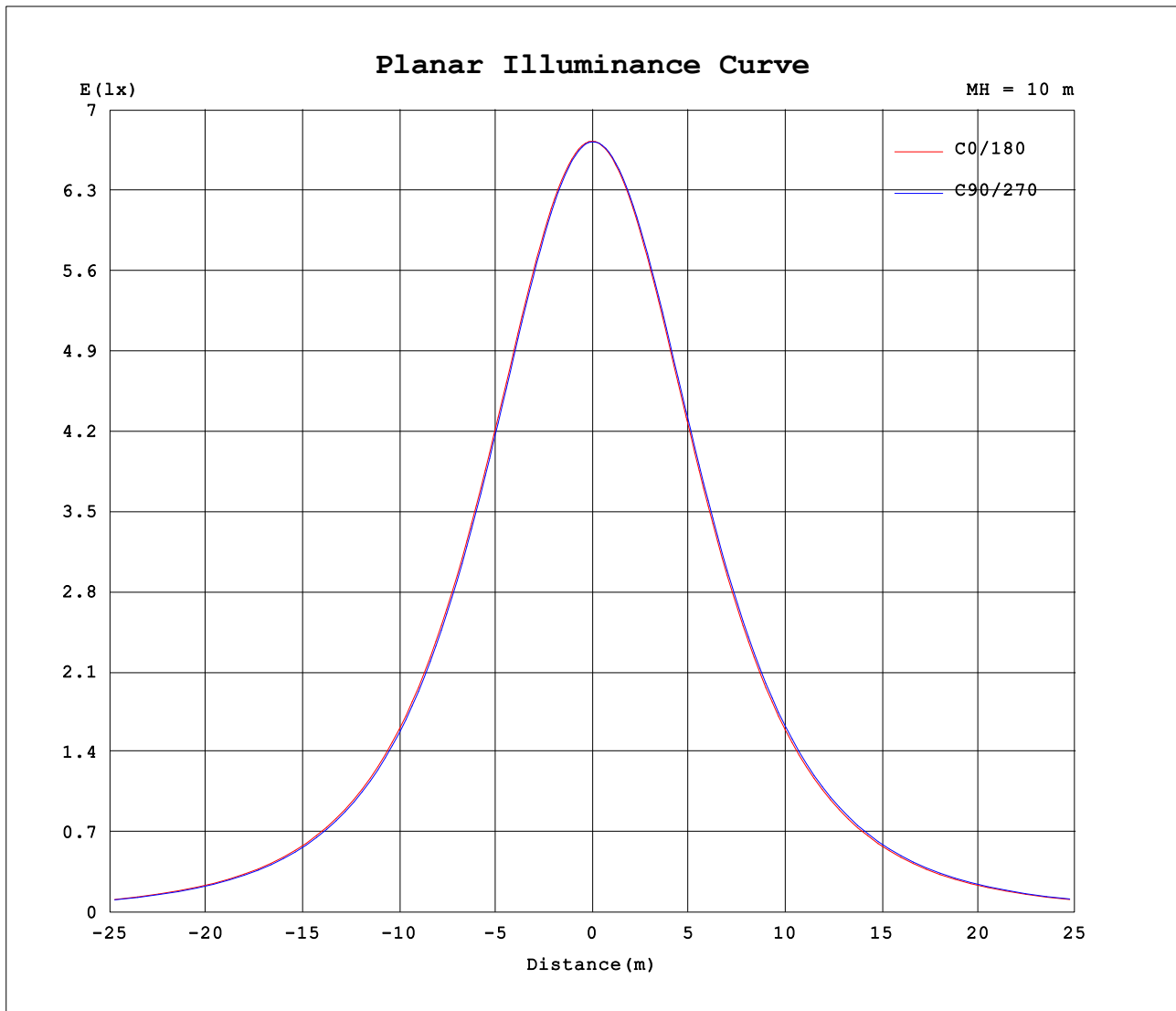


Note:The Curves indicate the illuminated area and the average illumination when the luminaire is at different distance.

C Range: 0 - 360DEG
 C Interval: 15.0DEG
 Test Speed: HIGH
 Temperature: 25.5DEG
 Operators:Frank.jin
 Test Date:2019-06-13

γ Range: 0 - 180DEG
 γ Interval: 1.0DEG
 Test System:EVERFINE GO-R5000_V2 SYSTEM V2.0.366
 Humidity: 57.2%
 Test Distance:2.096m [K=1.0000]
 Remarks:

Planar Illuminance Curve



C Range: 0 - 360DEG
C Interval: 15.0DEG
Test Speed: HIGH
Temperature: 25.5DEG
Operators: Frank.jin
Test Date: 2019-06-13

γ Range: 0 - 180DEG
 γ Interval: 1.0DEG
Test System: EVERFINE GO-R5000_V2 SYSTEM V2.0.366
Humidity: 57.2%
Test Distance: 2.096m [K=1.0000]
Remarks:

LUMINOUS DISTRIBUTION INTENSITY DATA

Test:U:230.13V I:0.0882A P:18.622W PF:0.9170 Freq:49.99Hz Lamp Flux:1981.53x1 lm		
NAME:	TYPE:	WEIGHT:
SPEC.:	DIM.:	SERIAL No.:
MFR.:	SUR.:	Shielding Angle:

Table--1

UNIT: cd

C (DEG) γ (DEG)	0	15	30	45	60	75	90	105	120	135	150	165	180	195	210	225	240	255	270
0	673	673	673	673	673	673	673	673	673	673	673	673	673	673	673	673	673	673	673
5	670	669	669	669	669	668	668	668	668	668	669	669	670	670	670	671	671	671	671
10	661	660	659	659	658	658	658	658	658	659	659	660	661	661	662	663	663	664	664
15	646	645	644	643	643	643	642	642	642	643	644	644	646	647	648	649	650	650	650
20	626	625	624	623	622	621	621	621	621	622	623	624	626	627	628	629	630	631	632
25	600	599	597	597	595	595	594	594	595	595	596	597	601	602	603	605	606	607	607
30	570	568	567	565	564	564	563	563	563	564	565	566	570	572	573	575	576	577	578
35	535	533	531	530	529	528	527	527	527	528	529	531	535	536	538	540	541	542	543
40	495	493	492	490	489	488	487	487	487	488	489	491	495	497	499	501	502	503	504
45	452	450	448	447	445	444	443	443	444	444	445	447	451	453	455	457	459	460	461
50	406	404	402	400	399	398	397	396	397	397	398	400	405	406	408	410	412	413	414
55	356	354	353	351	349	348	347	347	347	347	348	350	354	356	358	360	362	363	364
60	304	302	301	299	298	296	295	295	295	295	296	297	302	304	306	307	309	311	312
65	251	249	248	246	245	244	243	242	242	242	243	244	248	250	251	253	255	256	257
70	197	195	194	192	191	190	189	188	188	188	188	189	194	195	197	198	200	201	202
75	143	142	141	140	138	137	136	135	134	135	135	136	141	142	144	145	147	148	149
80	92.4	91.1	89.8	88.4	87.2	86.0	84.7	84.0	83.6	83.5	84.0	84.9	89.4	90.8	92.4	94.1	95.6	97.0	97.9
85	48.5	47.3	46.2	45.0	43.8	42.9	41.9	41.4	41.2	41.2	41.6	42.4	45.4	46.7	48.2	49.7	51.0	52.1	52.8
90	16.9	16.1	15.6	15.2	15.0	14.8	14.6	14.4	14.3	14.5	14.6	14.9	17.9	17.9	19.0	20.1	21.0	21.3	21.9
95	2.50	2.31	2.13	2.00	1.85	1.78	1.76	1.91	2.18	2.50	3.01	3.61	4.43	4.71	4.93	5.05	4.98	4.78	4.44
100	0.01	0.01	0.05	0.12	0.22	0.36	0.53	0.69	0.81	0.97	1.19	1.44	1.78	2.02	2.07	2.13	2.10	1.94	1.66
105	0.00	0.00	0.00	0.00	0.00	0.01	0.00	0.03	0.11	0.15	0.25	0.45	0.73	0.91	1.02	0.99	0.97	0.85	0.66
110	0.00	0.00	0.00	0.00	0.00	0.00	0.00	0.01	0.03	0.04	0.05	0.04	0.04	0.12	0.20	0.24	0.19	0.09	0.05
115	0.00	0.00	0.00	0.00	0.00	0.00	0.00	0.00	0.01	0.02	0.02	0.02	0.01	0.00	0.00	0.00	0.00	0.00	0.00
120	0.00	0.00	0.00	0.00	0.00	0.00	0.00	0.00	0.00	0.01	0.01	0.01	0.00	0.00	0.00	0.00	0.00	0.00	0.00
125	0.00	0.00	0.00	0.00	0.00	0.00	0.00	0.00	0.00	0.00	0.00	0.00	0.00	0.00	0.00	0.00	0.00	0.00	0.00
130	0.00	0.00	0.00	0.00	0.00	0.00	0.00	0.00	0.00	0.00	0.00	0.00	0.00	0.00	0.00	0.00	0.00	0.00	0.00
135	0.00	0.00	0.00	0.00	0.00	0.00	0.00	0.00	0.00	0.00	0.00	0.00	0.00	0.00	0.00	0.00	0.00	0.00	0.00
140	0.00	0.00	0.00	0.00	0.00	0.00	0.00	0.00	0.00	0.00	0.00	0.00	0.00	0.00	0.00	0.00	0.00	0.00	0.00
145	0.00	0.00	0.00	0.00	0.00	0.00	0.00	0.00	0.00	0.00	0.00	0.00	0.00	0.00	0.00	0.00	0.00	0.00	0.00
150	0.00	0.00	0.00	0.00	0.00	0.00	0.00	0.00	0.00	0.00	0.00	0.00	0.00	0.00	0.00	0.00	0.00	0.00	0.00
155	0.00	0.00	0.00	0.00	0.00	0.00	0.00	0.00	0.00	0.00	0.00	0.00	0.00	0.00	0.00	0.00	0.00	0.00	0.00
160	0.00	0.00	0.00	0.00	0.00	0.00	0.00	0.00	0.00	0.00	0.00	0.00	0.00	0.00	0.00	0.00	0.00	0.00	0.00
165	0.00	0.00	0.00	0.00	0.00	0.00	0.00	0.00	0.00	0.00	0.00	0.00	0.00	0.00	0.00	0.00	0.00	0.00	0.00
170	0.00	0.00	0.00	0.00	0.00	0.00	0.00	0.00	0.00	0.00	0.00	0.00	0.00	0.00	0.00	0.00	0.00	0.00	0.00
175	0.00	0.00	0.00	0.00	0.00	0.00	0.00	0.00	0.00	0.00	0.00	0.00	0.00	0.00	0.00	0.00	0.00	0.00	0.00
180	0.00	0.00	0.00	0.00	0.00	0.00	0.00	0.00	0.00	0.00	0.00	0.00	0.00	0.00	0.00	0.00	0.00	0.00	0.00

C Range: 0 - 360DEG
 C Interval: 15.0DEG
 Test Speed: HIGH
 Temperature: 25.5DEG
 Operators: Frank.jin
 Test Date: 2019-06-13

γ Range: 0 - 180DEG
 γ Interval: 1.0DEG
 Test System: EVERFINE GO-R5000_V2 SYSTEM V2.0.366
 Humidity: 57.2%
 Test Distance: 2.096m [K=1.0000]
 Remarks:

LUMINOUS DISTRIBUTION INTENSITY DATA

Test:U:230.13V I:0.0882A P:18.622W PF:0.9170 Freq:49.99Hz Lamp Flux:1981.53x1 lm		
NAME:	TYPE:	WEIGHT:
SPEC.:	DIM.:	SERIAL No.:
MFR.:	SUR.:	Shielding Angle:

Table--2

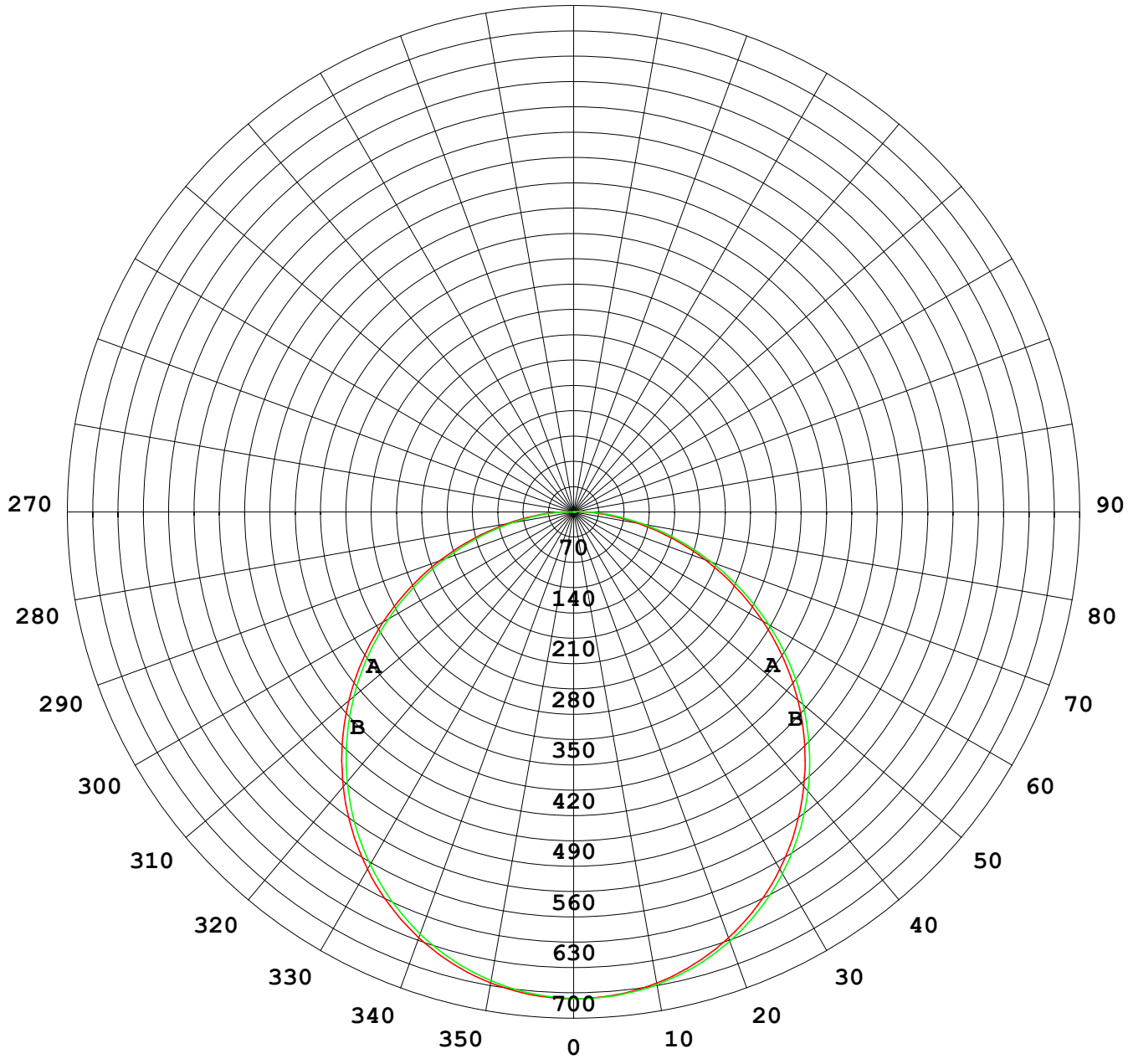
UNIT: cd

C (DEG) γ (DEG)	285	300	315	330	345														
0	673	673	673	673	673														
5	671	671	671	671	670														
10	664	663	663	663	662														
15	651	650	650	649	648														
20	632	631	631	630	629														
25	607	607	606	605	603														
30	578	577	576	575	574														
35	543	543	542	540	539														
40	504	504	503	501	500														
45	461	461	460	458	456														
50	414	414	413	412	410														
55	365	364	364	362	361														
60	312	312	311	310	309														
65	258	258	257	256	255														
70	203	203	203	202	201														
75	150	150	150	149	148														
80	98.5	98.6	98.4	97.6	96.7														
85	53.2	53.4	53.1	52.5	51.6														
90	22.0	21.7	21.5	20.7	19.8														
95	4.05	3.75	3.57	3.37	3.09														
100	1.34	1.02	0.75	0.41	0.18														
105	0.45	0.28	0.07	0.00	0.00														
110	0.01	0.00	0.00	0.00	0.00														
115	0.00	0.00	0.00	0.00	0.00														
120	0.00	0.00	0.00	0.00	0.00														
125	0.00	0.00	0.00	0.00	0.00														
130	0.00	0.00	0.00	0.00	0.00														
135	0.00	0.00	0.00	0.00	0.00														
140	0.00	0.00	0.00	0.00	0.00														
145	0.00	0.00	0.00	0.00	0.00														
150	0.00	0.00	0.00	0.00	0.00														
155	0.00	0.00	0.00	0.00	0.00														
160	0.00	0.00	0.00	0.00	0.00														
165	0.00	0.00	0.00	0.00	0.00														
170	0.00	0.00	0.00	0.00	0.00														
175	0.00	0.00	0.00	0.00	0.00														
180	0.00	0.00	0.00	0.00	0.00														

C Range: 0 - 360DEG
 C Interval: 15.0DEG
 Test Speed: HIGH
 Temperature: 25.5DEG
 Operators: Frank.jin
 Test Date: 2019-06-13

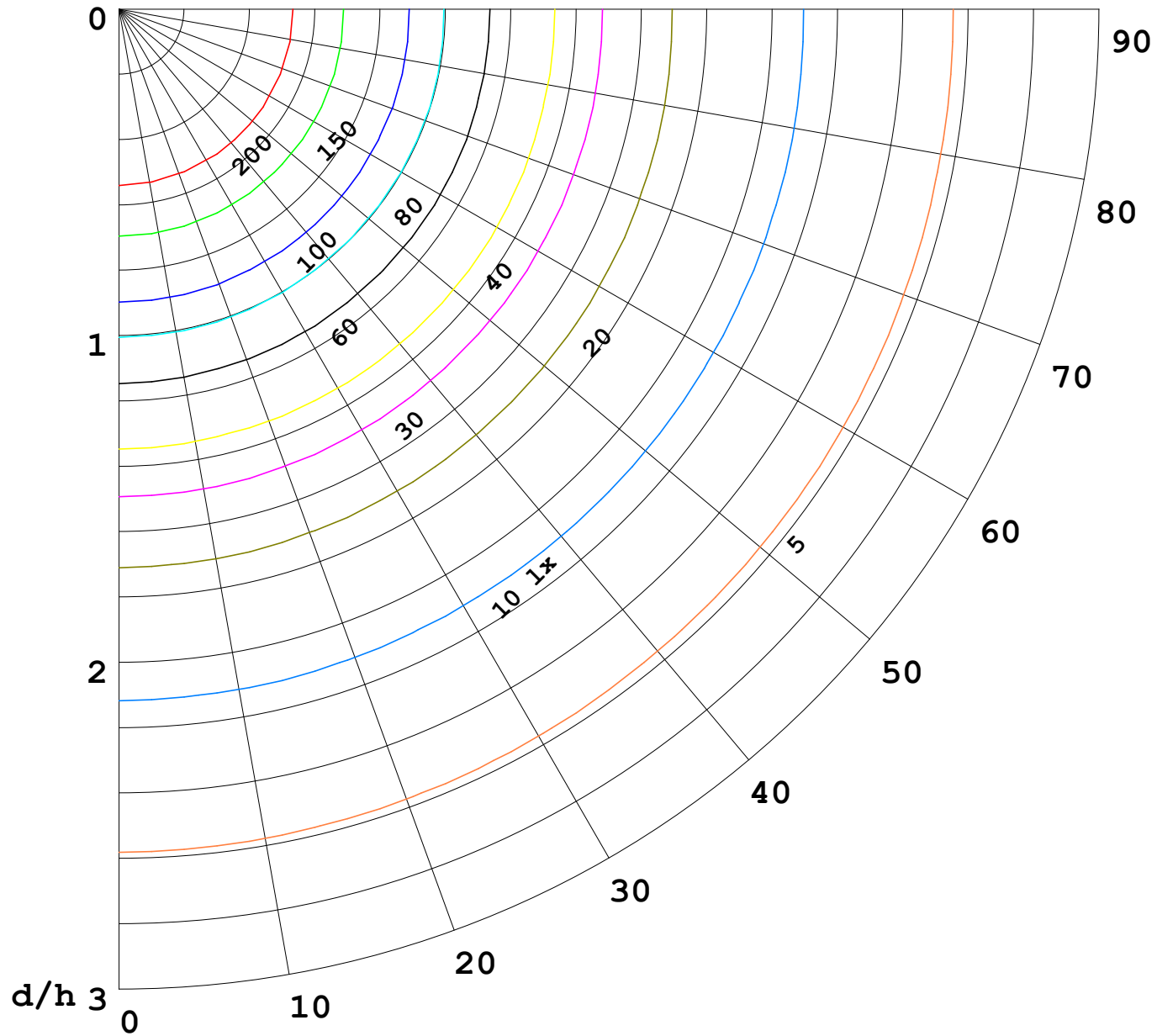
γ Range: 0 - 180DEG
 γ Interval: 1.0DEG
 Test System: EVERFINE GO-R5000_V2 SYSTEM V2.0.366
 Humidity: 57.2%
 Test Distance: 2.096m [K=1.0000]
 Remarks:

I (cd)



1000 lm

$K = 1$



F = 1000 lm
 K = 0.7
 Hcc = 0.8 m
 Hfc = 0.0 m
 Eave = 100 lx

—————	Pcc	Pw	Pfc
—————	70	50	30
—————	50	30	20

